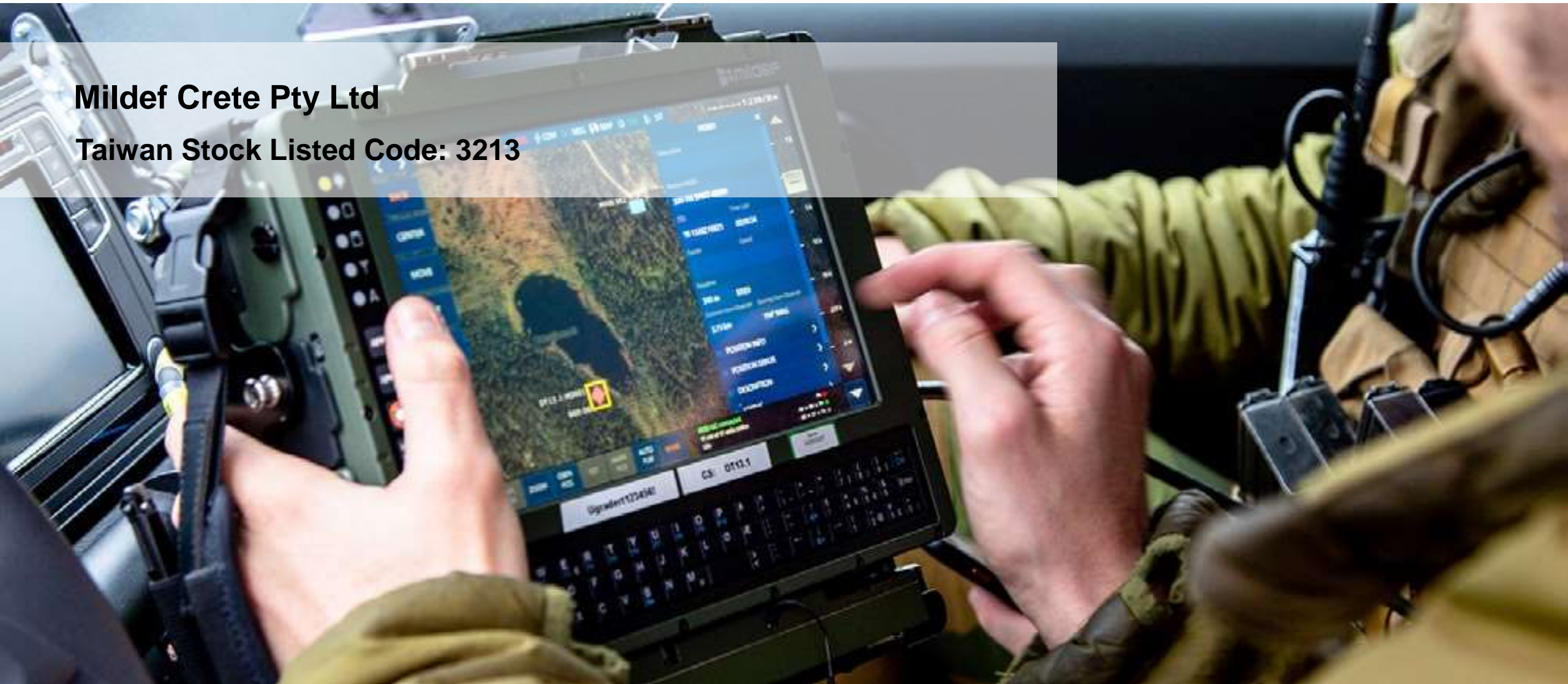


Mildef Crete Pty Ltd

Taiwan Stock Listed Code: 3213



CUSTOM SOLUTIONS IN RUGGED ELECTRONICS

Enhancing Communications in Harsh Environments



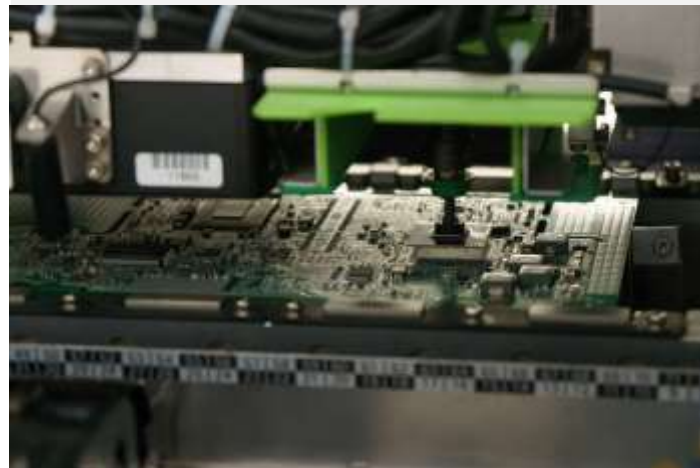
About Mildef Crete



Founded in 1990, Mildef is an international company at the forefront of designing, developing and manufacturing rugged computers and special electronics for communication in extreme environments where reliability, robustness and high performance are crucial.

Our offer includes defence and mining required form factors that saves space and enables more functionality in the harshest environments. We develop customised communication devices and special electronics based on our customers' specifications and specific requirements

Listed in Taiwan Stock Exchange in 2004, code 3213, **100% owned Taiwan manufacturer** with solid financial support.



Y2021 Operating Income
US\$100M

Y2021 Net Profit
\$22M

Y2021 R&D Investment
\$2.2M



Y1990
Founded



300+
Global Employees



2 (Taiwan)
Manufacturing Base

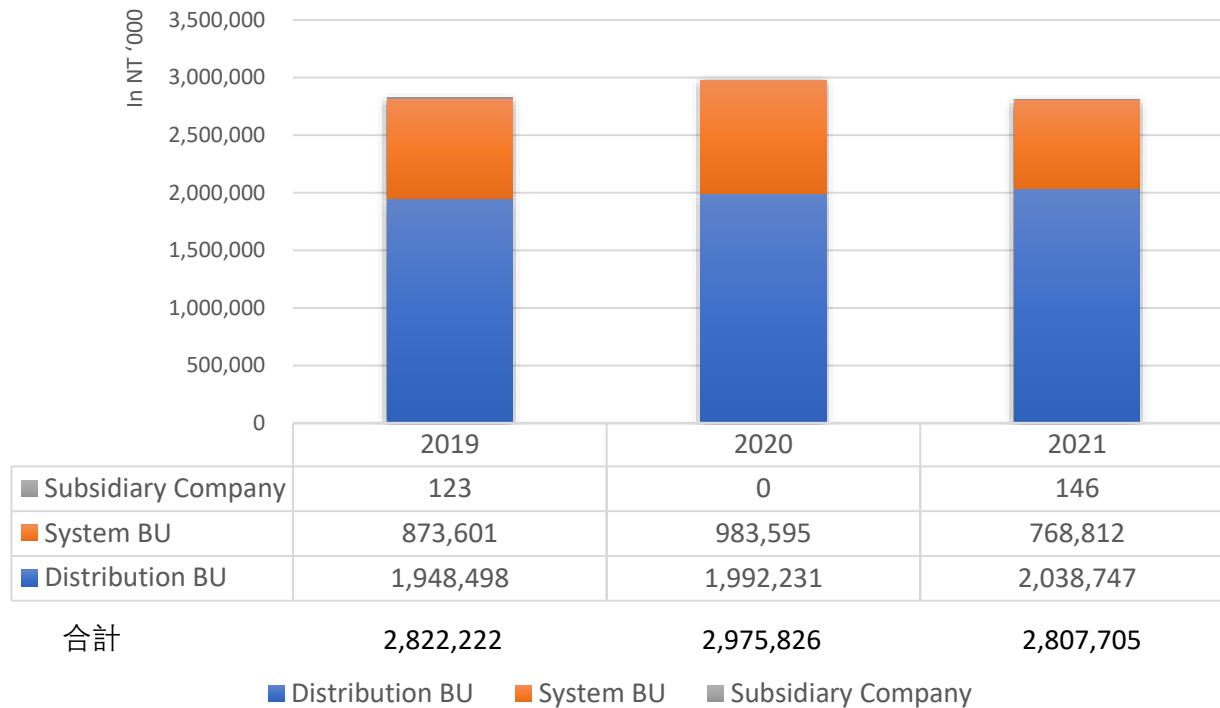


5 Worldwide partners
Offices

Mildef Crete Pty Ltd - Strong Financial Health

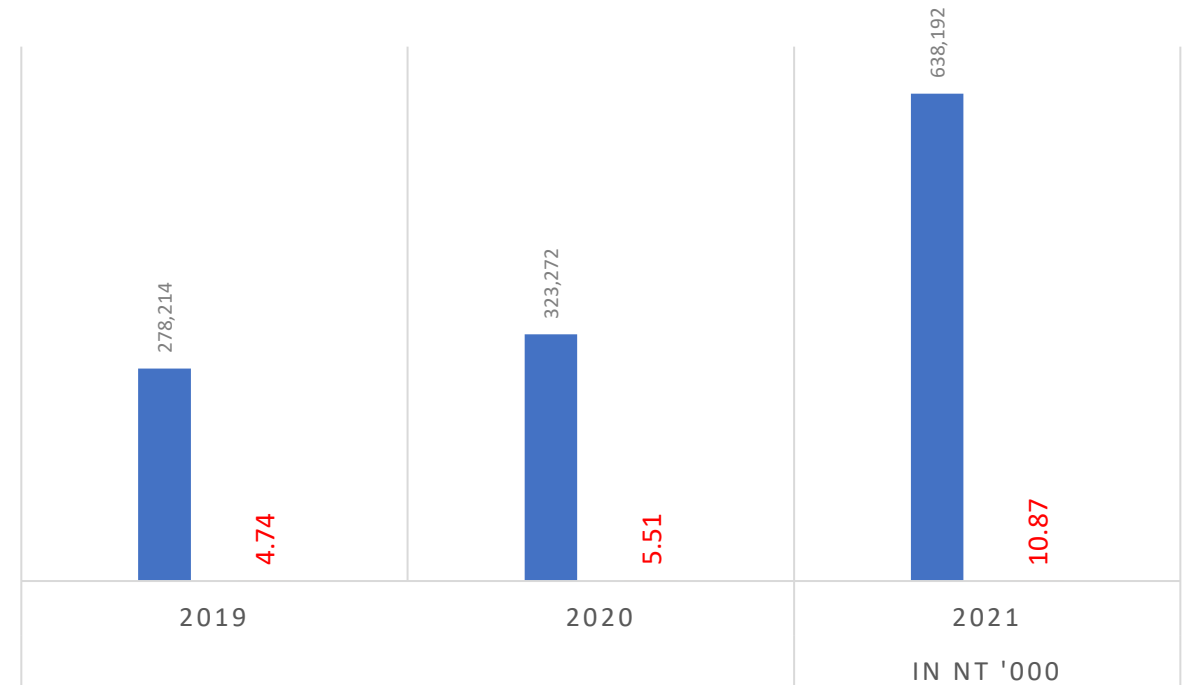
Since its founding in 1990, Mildef Crete has consistently prioritized strong financial health and stability. The company is prudent in mitigating financial risks and is able adapt to market changes. **Mildef Crete is a public listed company in the Taiwan Stock Exchange since 2004**

Mildef Crete Computer 3 years consolidated financial report



3 YEARS EARNING REPORT

Net Profit After Tax (Blue), Earning Per Share After Tax (Orange)



Computer Distribution BU

Your Most Professional Laptops Specialist



Distribution BU

Established : 1999

Business Operation : Laptop Retail and Repair Services

Retail Shops : 18

Retail location : Taiwan Key Computer Districts (Guanghua Computer District, NOVA Computer Plaza etc)

(Taipei : 7 TaoYuan : 1 Zhongli : 1 Xinzhu : 1 TaiZhong : 2 Tainan : 2 GaoXiuong : 4)

No of employee : 128



Distribution BU - Continue

Competitive Advantage

- **Management and sales expenses are lower than competitions**
Excellent information Management System : Internal MIS development
Customization to suit Mildef distribution business model
 - Good inventory management (Aver Inv turn-around days 31.36)
- **Average unit price (ASP) higher than peers**
Professional sales team with recommendation to high ASP and high margin peripheral products
 - Gross profit has also grown year by year
- **The country's largest laptop chain store**
 - Large sales volume, with the advantage of price negotiation.
- **High customer satisfaction**
 - Club Members exceeded 260 thousands, provide members after sales service enquiries (268,842)



Mildef Crete

Market Share : 16.13%

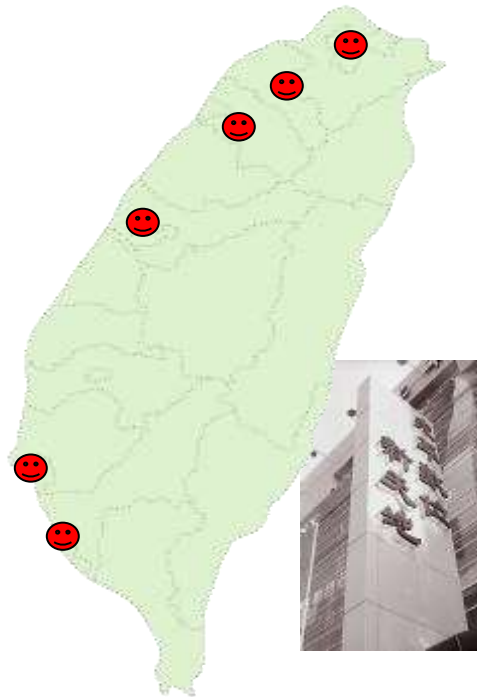
Distribution Chain Info

Rank: Number 1 (Internal
multiple brands Share Information)

Distribution BU– 18 sales and service locations



- TP : 7
- TY : 1
- ZL : 1
- XZ : 1
- TZ : 2
- TN : 2
- GX : 4



CUSTOM SOLUTIONS IN RUGGED ELECTRONICS

Enhancing Communications in Harsh Environments

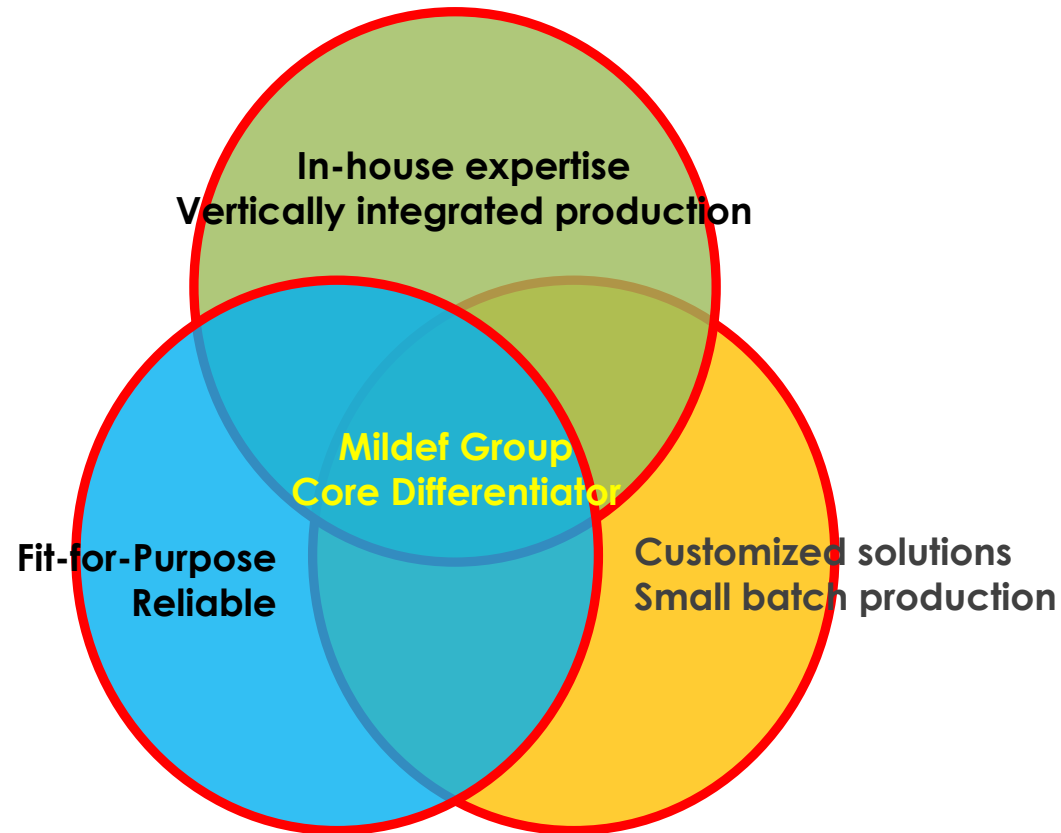


Mildef Group - Offices and Manufacturing

Strong Worldwide Service Support
20 Years Experience in Defense



MilDef Group - Core Strengths and Differentiators



MilDef Group offers a portfolio of products and services with a complete range of rugged electronics, software solutions, and services.

The company is in the business of customised rugged digital electronics solutions, based upon handhelds, tablets, laptops and accessories, for use in the most demanding environments.

Financially robust and strong, Mildef has is the only manufacturer that has in-house end-to-end solution from product design, verification, test certifications and final delivery.

Mildef's strength are its in-house expertise and vertically integrated production that enables customized design for reliable and fit-for purpose products to our customers' requirements. Mildef is the only rugged electronics supplier that is able to offer small batch, customized production.

Customized Rugged product solutions for Mining and Defense



Our **Mining solutions** help customers to meet their communication challenges in harsh underground environments and enable to set new benchmarks in rugged electronics applications in the mining industry.



Our **Defence solutions** meet military standard certifications and are built to survive and perform under the most demanding situations in air, sea and land.

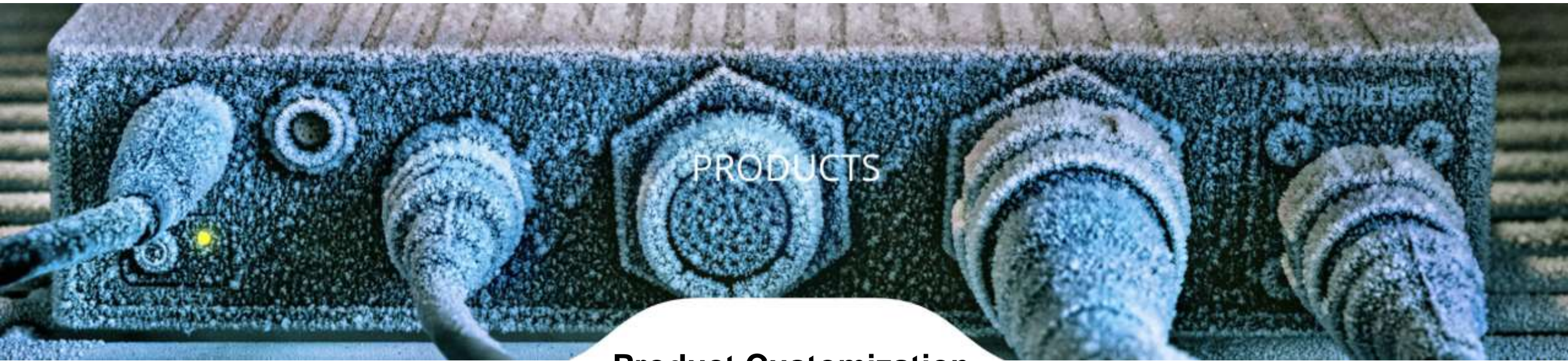


It's essential that our clients are aided by the technology, rather than hampered by it. Ruggedness, reliability and usability are vital factors.

A close-up photograph of a complex industrial probe assembly. The device features a black cylindrical body with various orange and white components, and a silver-colored metal shaft. It is set against a background of blue, textured acoustic foam. A bright light source from the top left creates a lens flare effect.

Built Tough from the Start

Customized, purpose-built, tested for fit-for-purpose according to the most demanding specifications



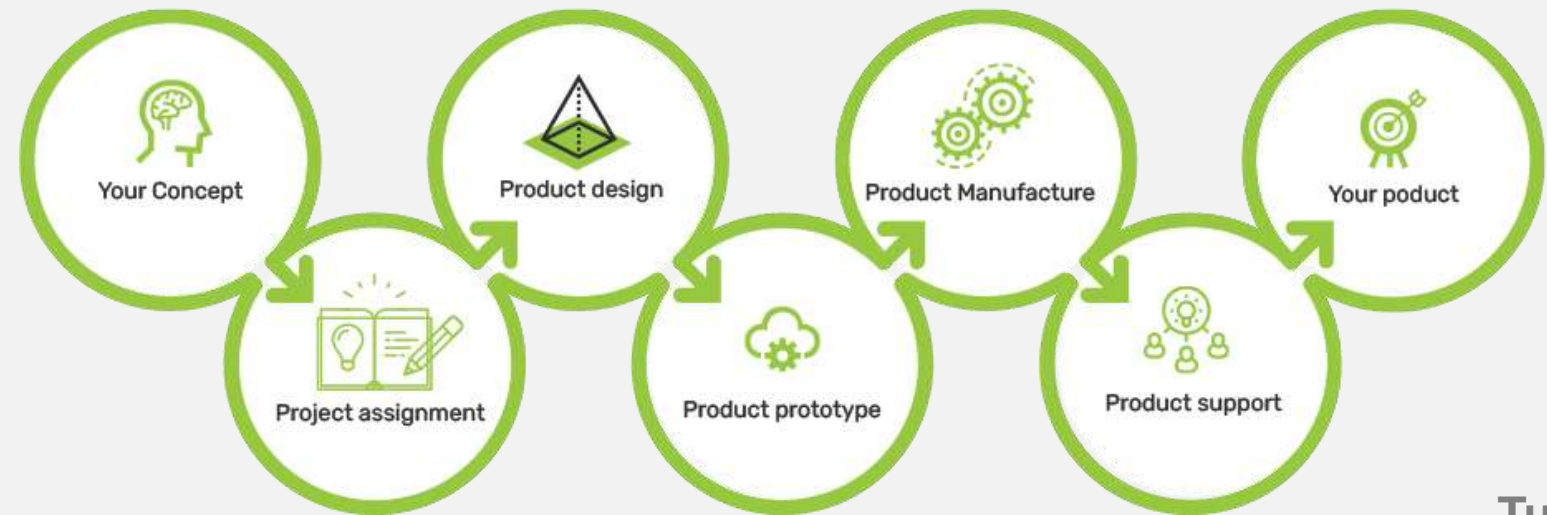
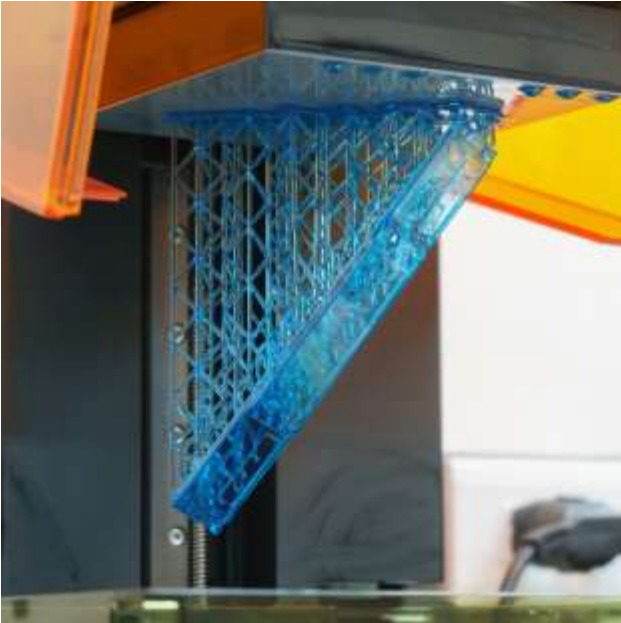
Product Customization

Our strength lies in the supply of customized products for harsh and hostile environments, where reliability and resistance to outside influences (such as temperature, shock, vibration, water, dust, etc.) are paramount.

If you can't find what you are looking for, we will design, customize and build the right product for your needs.

All our products are designed with customization in mind. If you have unique requirements for connectors, pin assignment, I/O, or other parameters of specification, we can meet your needs.

Fully Vertically Integrated In-House Manufacturing



Turnkey



Product Portfolio

Handhelds, Tablets and Laptops – Purpose built, test and fit-for purpose for use in the most demanding environments

Products

Maintaining high performance and robustness in the harshest and most demanding environment



Products

Extensive range

We offer an extensive range of rugged computers and accessories for use in harsh environments.

Mobile solutions

Our products ensure maintaining high situational awareness and tactical advantage in fast moving dynamic situations. Our products are built for applications in harsh conditions and can be customized to meet customers' requirements.

Customized

MilDef is a flexible and service-minded company. We can rapidly customize units to exacting standards, whether it is a few tailored products or hundreds of units. Computers can be modified and equipment connectors changed to suit your complete system. In addition, our accessories enhance the performance of our computer equipment. Naturally, they are designed for tight integration with our products.

Our development department uses the latest technology in the design, development and manufacture of our product range and in customizing computers for our customers. We have our own EMI chamber where we can test products and verify their performance.

Compliance and Military Standards

All our units are built to comply with tough military standards to further ensure their high performance over long equipment lifecycles. They are, at a minimum, true IP54 products and fulfil MIL-STD-810 and MIL-STD-461.



Laptops

RS13

Specifications:
CPU: Intel® Core™ i7-1600U (4M Cache, up to 3.90 GHz)
Display: 13.3" 1920 x 1080 LED backlit
Display brightness: 400 nits
Memory: Up to 16 GB DDR4-2133 MHz
Storage: 2.5" SATA III SSD (removable)
Graphics: Intel® HD Graphics 620
Battery: 5.7h Li-Polymer (5040mAh)
Input devices: 60-key backlit keyboard, resistive single-touch touchpad
Audio: HD Audio and stereo speakers, embedded digital mic
Operating System: Windows 10
Temperature operation: -20°C to +40°C (-4°F to +104°F)
Temperature storage: -40°C to +70°C (-40°F to +158°F)
Dimensions (W x D x H): 308 x 265 x 31.5 mm (12.11 x 10.43 x 1.24 in) w/ bumpers
Weight: 2.3 kg (5.07 lb) w/ battery
Compliant to: CE, FCC, UKCA, WEEE, REACH, WHG, RoHS2, PHS, MIL-STD-883C and MIL-STD-883D



Ports and connectors:	Options and accessories:	
1x Display port or VGA port	1x 2nd 802.11 a/b/g/n/ac	MILAN 802.11 a/b/g/n/ac
1x SD Card Slot	1x 802.11 Giga LAN	Bluetooth 4.2 (BLE)
1x Serial port (DB9)	1x Docking connector (POGO)	Resistive multi-touch screen
1x USB 3.1/USB-IF BC 1.2 for 1.5 A fast charges	1x MIL DC in (DC-19V)	Surge protector/EVA module (DC-12-32V)
		-30°C/-22°F Operating Temperature
		MIL-STD-883C Ground Navy
		MIL-STD-883C Ground Army

RK15 (available in Q2, 2023)

Specifications:
CPU: Intel® Xeon® W-11805AUE Processor (8 Cores, 24MB Cache, up to 4.5 GHz)
Display: 15" UKCA 1920 x 1200 LED backlit
Display brightness: 800 nits
Memory: Up to 64 GB DDR4-3200 MHz (optional ECC DRAM)
Storage: Removable H.2 PCIe NVMe SSD (optional dual m.2 PCIe NVMe SSD)
Operating System: Windows 10/11
Graphics: Intel® Iris Xe
Battery: 51.8V Li-Ion (8700mAh)
Input devices: 60-key backlit keyboard, resistive touchpad
Audio: HD Audio and Stereo Speakers
Security: TPM2.0
Temperatures: -20°C to +55°C (-4°F to +131°F)
Temperature storage: -40°C to +70°C (-40°F to +158°F)
Dimensions (W x D x H): 301.8 x 294.2 x 78.7 mm (11.84 x 11.58 x 3.10 in) w/ bumpers
Weight: 3.5 kg (7.72 lb)
Compliant to: CE, FCC, UKCA, WHG, WEEE, REACH, RoHS2, PHS (without protection caps), MIL-STD-883C and MIL-STD-883D



Ports and connectors:	Options and accessories:	
2x USB 3.1 Gen 1	Smart Card Reader	GPS (Real-MNN)
1x USB 2.0	2x Serial port (DB9)	Intel® Wi-Fi 6E AX201 (WiFi 6E, 6E, 6E 11 S-2)
3x 3.5 mm audio jack (W, L, Line-in/earphone)	COM1 & 2, 8K05 selectable	2nd battery 10.8V Li-Ion (8700mAh) Multi battery charger
1x 802.11 Giga LAN	2nd Giga LAN (Intel Q2)	Surge protector/EVA module (DC-12-32V)
1x 802.11 Giga LAN (2.5Gbps)	Removable 2nd SATA III SSD	-30°C/-22°F Operating Temp
1x Removable DVD-RW (H/Tab Bay)	3rd SATA III	MIL-STD-883C Ground Navy
	Removable 2" battery (in Flex Bay)	MIL-STD-883C Ground Army
	Resistive single touch screen	
	Flex Bay with DC, PCIe, USB, LAN, SATA and serial signals for customer specific needs	

RW14

Specifications:
CPU: Intel® Xeon® E-2276M Processor (8 Cores, 12MB Smart Cache, up to 4.40 GHz)
Display: 15.6" (1920x1080) LED backlit, AG Glass, Optical bonding, Sunlight readable
Display brightness: 500 nits (optional 800 nits)
Memory: Max 128 GB, DDR4-2400 (optional ECC DRAM)
Operating System: Windows 10 and Server 2016 & 2019
Graphics: Intel® UHD Graphics P600
Battery: 2x13.8V/8000mAh Li-Ion
Storage: Up to 4x SATA III SSD (removable)
Input Devices: Resistive touch pad (single touch)
Audio: HD Audio and Stereo Speakers, embedded mic
Temperature: -20°C to +60°C (-4°F to +140°F)
Temperature storage: -40°C to +70°C (-40°F to +158°F)
Dimensions (W x D x H): 382 x 350 x 42 mm (15.43 x 13.78 x 1.65 in) w/ bumpers
Weight: 5.2 kg (depending on configuration)
Compliant to: CE, FCC, UKCA, WEEE, REACH, WHG, RoHS2, PHS (without protection caps), MIL-STD-883C and MIL-STD-883D



Ports and connectors:	Options and accessories:	
4x SATA III 5.25 Bay	800 nits high brightness display	Intel® GeForce® GTX1050-4GB discrete add-on card*
4x USB 3.1 Gen 1	TPM2.0	Surge protector/EVA module (DC-12-32V)
1x 802.11 Giga LAN (Intel® Q2)	2nd 802.11 Giga LAN (Intel® Q2)	-30 °C Operating Temperature
3x 3.5 mm Audio Jack (W, L, Line-in/earphone)	GPS (Silicon Real-MNN)	MIL-STD-883C - Ground Navy
1x Display Port (v1.2)	WiFi/BT (Intel® AC2000)	MIL-STD-883C - Ground Army
1x VGA	2x Serial ports / COM 3 & 4 (RS232C/422/485 8K05 selectable)	
2x Serial ports / COM 1 & 2 (RS232C/422/485 8K05 selectable)	1x Mini-Flex Bay (slide-off with 3rd-4th SSD)	
1x POGO dock port	Smart Card Reader	
1x MIL DC in (DC-59V)	Resistive multi-touch screen	

RB14

Specifications:
CPU: Intel® Xeon® E-2276M Processor (8 Cores, 12MB Smart Cache, up to 4.40 GHz)
Display: 15.6" (1920x1080) LED backlit, AG Glass, Optical bonding, Sunlight readable
Display brightness: 800 nits
Memory: Max 128 GB, DDR4-2400 (optional ECC DRAM)
Operating System: Windows 10 and Server 2016 & 2019
Graphics: Intel® UHD Graphics P600
Battery: 2x13.8V/8000mAh Li-Ion
Storage: Up to 4x SATA III SSD (removable)
Input Devices: Resistive touch pad (single touch)
Audio: HD Audio and Stereo Speakers, embedded mic
Temperature: -20°C to +60°C (-4°F to +140°F)
Temperature storage: -40°C to +70°C (-40°F to +158°F)
Dimensions (W x D x H): 382 x 350 x 42 mm (15.43 x 13.78 x 1.65 in) w/ bumpers
Weight: 5.2 kg (depending on configuration)
Compliant to: CE, FCC, UKCA, WEEE, REACH, WHG, RoHS2, PHS (without protection caps), MIL-STD-883C and MIL-STD-883D



Ports and connectors:	Options and accessories:	
4x SATA III 5.25 Bay	TPM2.0	Intel® GeForce® GTX1050-4GB discrete add-on card*
4x USB 3.1 Gen 1	2nd 802.11 Giga LAN (Intel® Q2)	Surge protector/EVA module (DC-12-32V)
1x 802.11 Giga LAN (Intel® Q2)	GPS (Silicon Real-MNN)	-30 °C Operating Temperature
3x 3.5 mm Audio Jack (W, L, Line-in/earphone)	WiFi/BT (Intel® AC2000)	MIL-STD-883C - Ground Navy
1x Display Port (v1.2)	2x Serial ports / COM 3 & 4 (RS232C/422/485 8K05 selectable)	MIL-STD-883C - Ground Army
1x VGA	1x Mini-Flex Bay (slide-off with 3rd-4th SSD)	
2x Serial ports / COM 1 & 2 (RS232C/422/485 8K05 selectable)	Smart Card Reader	
1x POGO dock port	Resistive multi-touch screen	
1x MIL DC in (DC-59V)		

Flex Bay

Available for all notebooks (RT, RK and RF Series)

Specifications:
 2x Gbit LAN
 2x COM-ports
 1x Full RS232/RS485
 1x Tx / Rx
 USB
 PCIe
 SATA
 Power in/out
 2nd HDD/SSD: SATA & Heater
 2nd Battery:
 7200 mAh
 Lithium Ion
 DVD±RW: 3.5"
 CDDVD SATA



Accessories – Keyboards and Docking Stations

IP54 Keyboard

Specifications:
89 key layout (emulates 101 /102 keys)
Windows keys, Elastomer keys (backlight)
Operating force: 60 +/-20 g
Full travel: 2 mm
Life: > 1 million times
Weight: 1.2 kg (2.6 lb), 1.7 kg (3.7 lb) with rubber plate (option)
Size of the key caps part: 275×100 mm (10.8×3.9 in)
Size of the keyboard:
325×172 mm (12.8×6.7 in) (W×D)
Designed to meet: IP54,
MIL-STD-461D (option)
Temp operating: -20 to +50 °C (-4°F to +122°F)
Temp storage: -30 to +70 °C (-22°F to +158°F)



Mini KBD

Specifications:
USB, 66 keys, backlight, right/left click, stickpointer, Magnesium
Designed to meet: IP54
Certifications: CE/FCC
Temp operating: -20 to +50°C (-4°F to +122°F)
Temp storage: -40 to +70°C (-40°F to +158°F)
Dimensions: 190×90×12 mm (7.5×3.5×0.5 in) (W×D×H)
Weight: 170 g (0.4 lb)



DockLite (DL 10) (option for DK & DR Series Tablets)

Connections:
1× RJ45 GigaLAN
2× USB 2.0
2× Sealed MIL USB 2.0
1× VGA (DB15)
2× RS232(DB9)
1× MIL DC in with surge protection
1× Audio Out
1× Mic



DockLite (DLDS) (option for DS Series Tablet)

Connections:
1× VGA (DB15)
1× MILAN
2× USB 2.0
1× RS232(DB9)
1× MIL DC in with surge protection



Ext. DC-DC Adapter (EVA 1275) (option for all computers)

Specifications:
DC Input Range: 12 ~ 32V
DC Output Voltage: 19V
Output Current: 5A (at 28V Input Voltage)
Ripple Voltage: 200 mV
Temp operating: -20 to +50°C (-4°F to +122°F)
Temp storage: -40 to +70°C (-40°F to +158°F)
Dimensions: 137(L) x 64(W) x 39.2(H)
*length without cables
Weight: 600g (1.4 lb)



Stand Unit (DR/DK) (option for DR Series Tablets)

Specifications:
Adjustable in all directions.
Dimensions: 270 × 300 × 160 mm
(10.6 × 11.8 × 6.3 in) (W×H×D)
Weight: 2 kg (4.4 lb)



Stand Unit (DS) (option for DS Series Tablets)

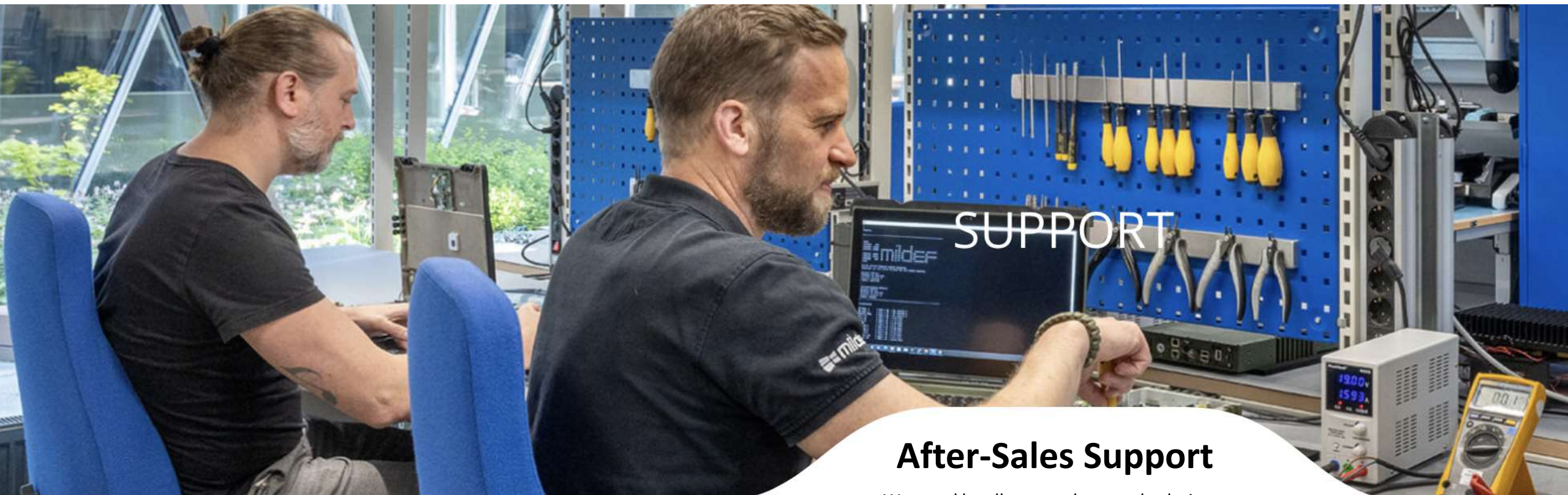
Specifications:
Adjustable in all directions.
Dimensions: 250 × 331 × 150 mm
(9.84 × 13.03 × 5.9 inch) (W×H×D)
Weight: 2 kg (4.4 lb)



Docking Station (DURS) (option for RS Series Laptop)

Specifications:
2x RS232* (DB9) *optional RS422 & RS485
1x USB2.0
1x USB3.0
1x VGA (DB15)
1x Megabit LAN (RJ45)
1x Gigabit LAN (RJ45)
Temp operating: -20 to +55°C (-4°F to +131°F)
Temp storage: -40 to +70°C (-40°F to +158°F)
Dimensions: 386 × 329.5 × 54.2 mm
(15.2 × 13.0 × 2.1 inch) (W×H×D)
Weight: 3.15 kg (6.95 lb)





SUPPORT

After-Sales Support

We stand by all our products and solutions.

We know that after-sales service and support with a sense of urgency are top priorities for our customers

All our products come with standard 5-year warranty + 5-year spare parts

Sustainable

MilDef's sustainability work is conducted from multiple perspectives, considering Environmental, Social and Governance (ESG)

We strives to maintain a good **ESG** balance that is crucial to meeting the needs of the present without jeopardizing the ability of future generations to meet their needs.

MilDef operates in compliance with mandatory requirements, such as applicable laws and regulations, applicable organizational and industry standards, contractual requirements and any codes of conduct.

MilDef strives to maintain a sustainable strategy to ensure responsible investment



We are **ISO 14001:2015** certified, and our care for the natural environment forms an important part of our business strategy.

Environmental Certifications

- ISO 14001
- RoHS
- REACH
- WEEE
- Battery Directive
- Packaging Directive



MilDef became a signatory to the UN Global Compact in 2021.

Quality

MilDef's products are proven around the world, in extremely demanding environments. We use only the high-quality design and materials to maintain long-term functionality and reliability. We are certified to **ISO 9001:2015** regarding design, development and production



Future Outlooks and Challenges

Outlooks

- I. New industries opportunities and digital AI transformation
- II. Military defense industry products expansion and upgrades
- III. The international geopolitical situation tension increased, therefore the demand has increased

Challenges

- I. The supply of upstream raw materials is cut off, and the supply chain continues to be tight
- II. Inventory management remains a challenge
- III. Exchange rate instability in the euro region, high international freight rates

Thanks for your Attention !